



GIG
CYMRU
NHS
WALES

Addysg a Gwella Iechyd
Cymru (AaGIC)
Health Education and
Improvement Wales (HEIW)

Croeso i Webinar SCP HN NMC a AaGIC

Welcome to HEIW SCP HN Webinar

Rhaglen ar gyfer y sesiwn

Plan for the session

Welcome - Marie Button/Rebecca Boore/Emma Davies
(HEIW)

Presentation – Elaine Robinson Nursing Education
Adviser (NMC)

Q&A session – Marie Button/Rebecca Boore/Emma
Davies/ Elaine Robinson

Sut i Ymddwyn ar Weminar

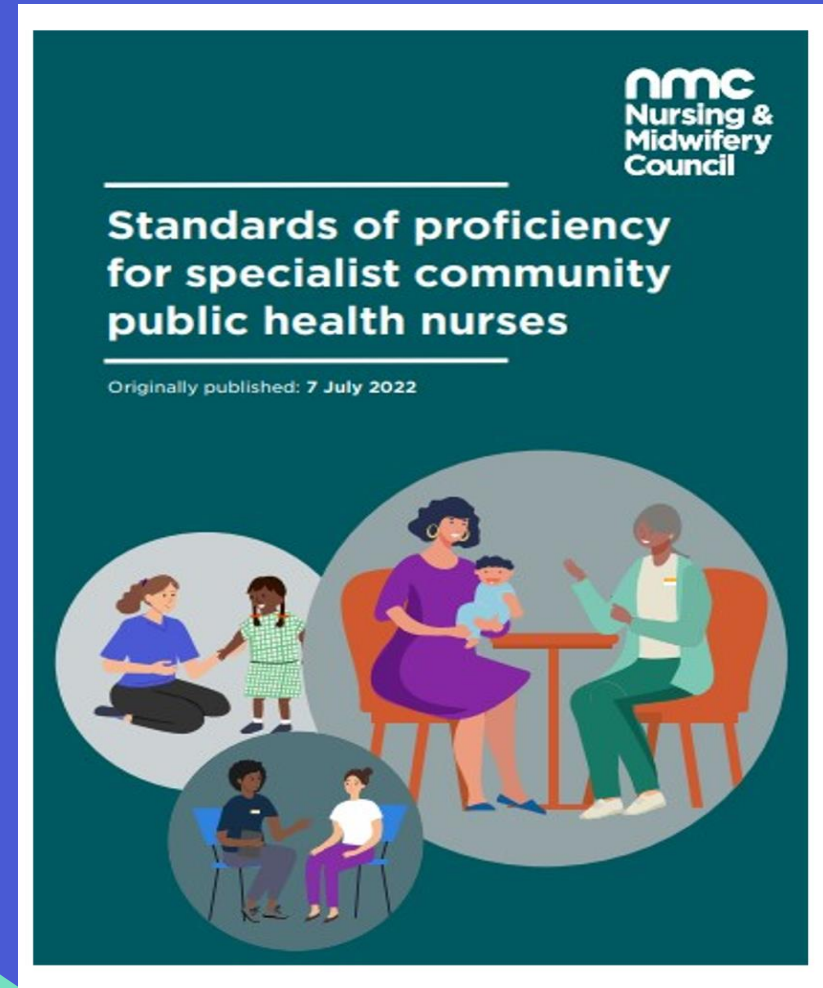
Webinar Etiquette

- Anonymity
- Note taking and recording
- Analysis
- Raise hand function
- Mic use
- Chat bar
- Introductions

SCPHN

Elaine Robinson
Nurse Education Adviser
elaine.robinson@nmc-uk.org

nmc
Nursing &
Midwifery
Council



Diweddariad yr NMC 2024

NMC update 2024

[Independent culture review - The Nursing and Midwifery Council \(nmc.org.uk\)](https://www.nmc.org.uk)



Cross NMC Safeguarding board and Safeguarding hub

Fitness to Practise plan

Independent Empowered to speak up guardian

EDI advisor to executive board

Changes from within- in collaboration with stakeholders

Diwygio Rheoleiddio Regulatory Reform



Regulation is agile and proportionate

Plans:

New legislative powers

Support FtP


Protected Titles

Ensuring strong effective regulation

Strengthening revalidation

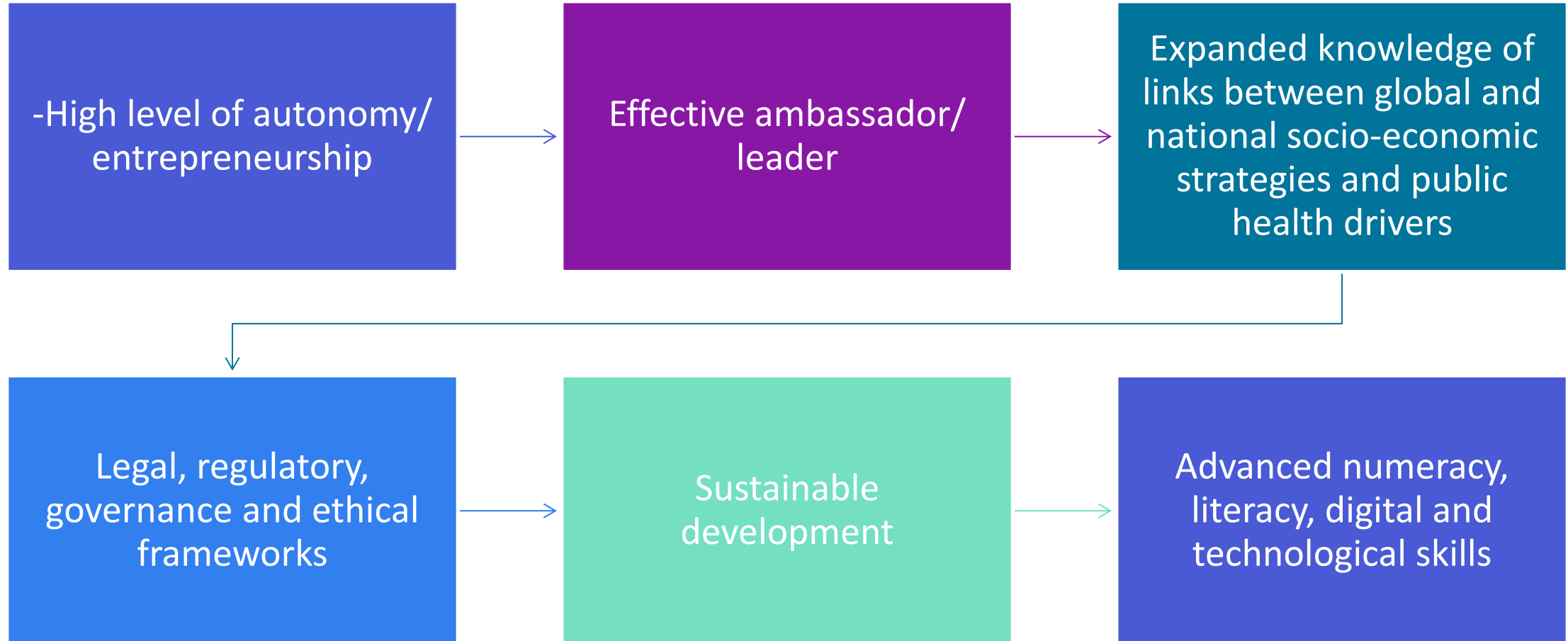
Safonau Hyfedredd SCPHN (2022)

SCPHN Standards of Proficiency (2022)

The six spheres of influence	Specialist Community Public Health Nursing core standards of proficiencies for HV, SN, OHN and PHN	Core and Field Specific Proficiencies
		
Sphere A	Autonomous specialist community public health nursing practice	Core only
Sphere B	Transforming specialist community public health nursing practice: evidence, research, evaluation and translation	Core only
Sphere C	Promoting human rights and addressing inequalities: assessment, surveillance and intervention	Core + HV or SN or OHN
Sphere D	Population health: enabling, supporting and improving health outcomes of people across the life course	Core + HV or SN or OHN
Sphere E	Advancing public health services and promoting healthy places, environments and cultures	Core + HV or SN or OHN
Sphere F	Leading and collaborating: from investment to action and dissemination	Core + HV or SN or OHN

Maes A: Ymarfer nyrsio iechyd cyhoeddus cymunedol arbenigol annibynnol

Sphere A: Autonomous specialist community public health nursing practice



Maes B: Arbenigwr trawsnewid nyrsio iechyd cyhoeddus cymunedol ymarfer; tystiolaeth, ymchwil, gwerthuso a chyfieithu

Sphere B: Transforming specialist community public health nursing practice; evidence, research, evaluation and translation



Local and national health policy



Multiple sources of evidence and research to inform practice



Identify gaps and address these



Use reliable data and statistics to inform health priorities and interventions



Appraise epidemiological research and use in SCPHN practice



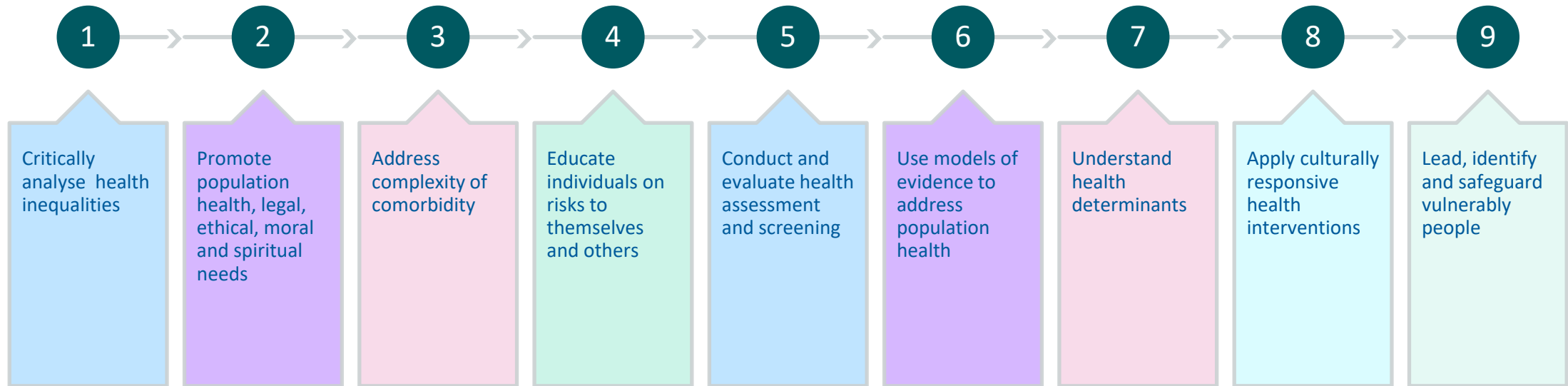
Appraise new innovations, genomics to evaluate population health



Share outcomes and lessons learned through peer review locally and nationally

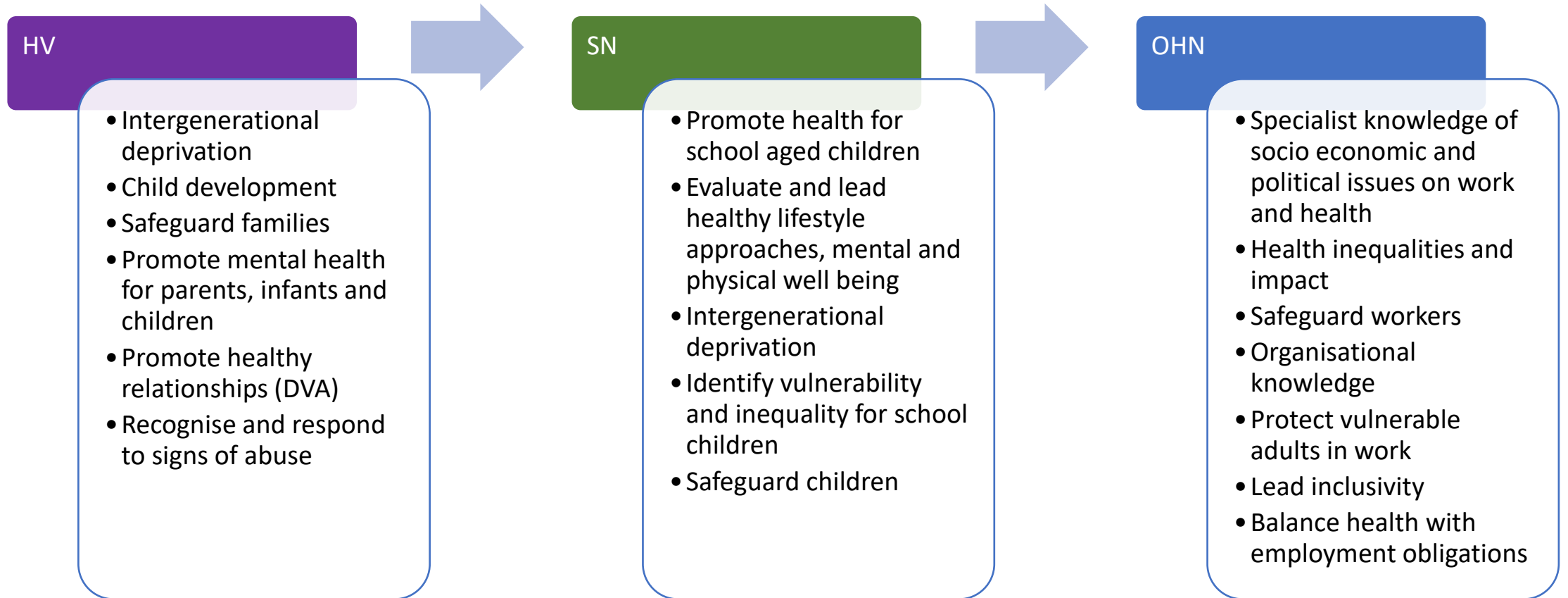
Maes C: Hyrwyddo hawliau dynol a mynd i'r afael ag anghydraddoldebau: asesu, gwyliadwriaeth ac ymyrraeth

Sphere C: Promoting human rights and addressing inequalities: assessment, surveillance and intervention



Maes C

Sphere C



Maes D: Iechyd y boblogaeth: galluogi, cefnogi a gwella canlyniadau iechyd pobl ar draws cwrs bywyd

Sphere D : Population health: enabling, supporting and improving health outcomes of people across the life course



Maes D

Sphere D



HV

Infant and child anatomy, physiology, genetics, geonomics, child development

Health assessments

Atypical development or anomalies

Advanced communication

Partnership with families

Infant, child and adult mental health

Attachment theories and models

Child illness and symptom management

Effects of trauma

Child and infant nutrition

Support bereaved parents, children



SN

Child development for school aged child

Validated assessment tools

Biopsychosocial, moral and spiritual development all stages across life course

Evaluate age and psychosocial development effects on health

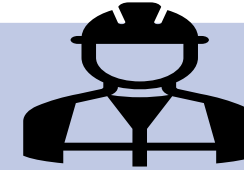
Illness and bereavement

Evidence based interventions

ACES

Assess and manage low mood in children and young peoples

Effects of social media, trauma alcohol/substances, violence, exploitation and gang culture



OH

Impact of OH services on workforce and wider population

Health, safety legislation and law

Ergonomics and occupational hygiene

Disease, illness and impairments act as barriers

Supportive workplaces

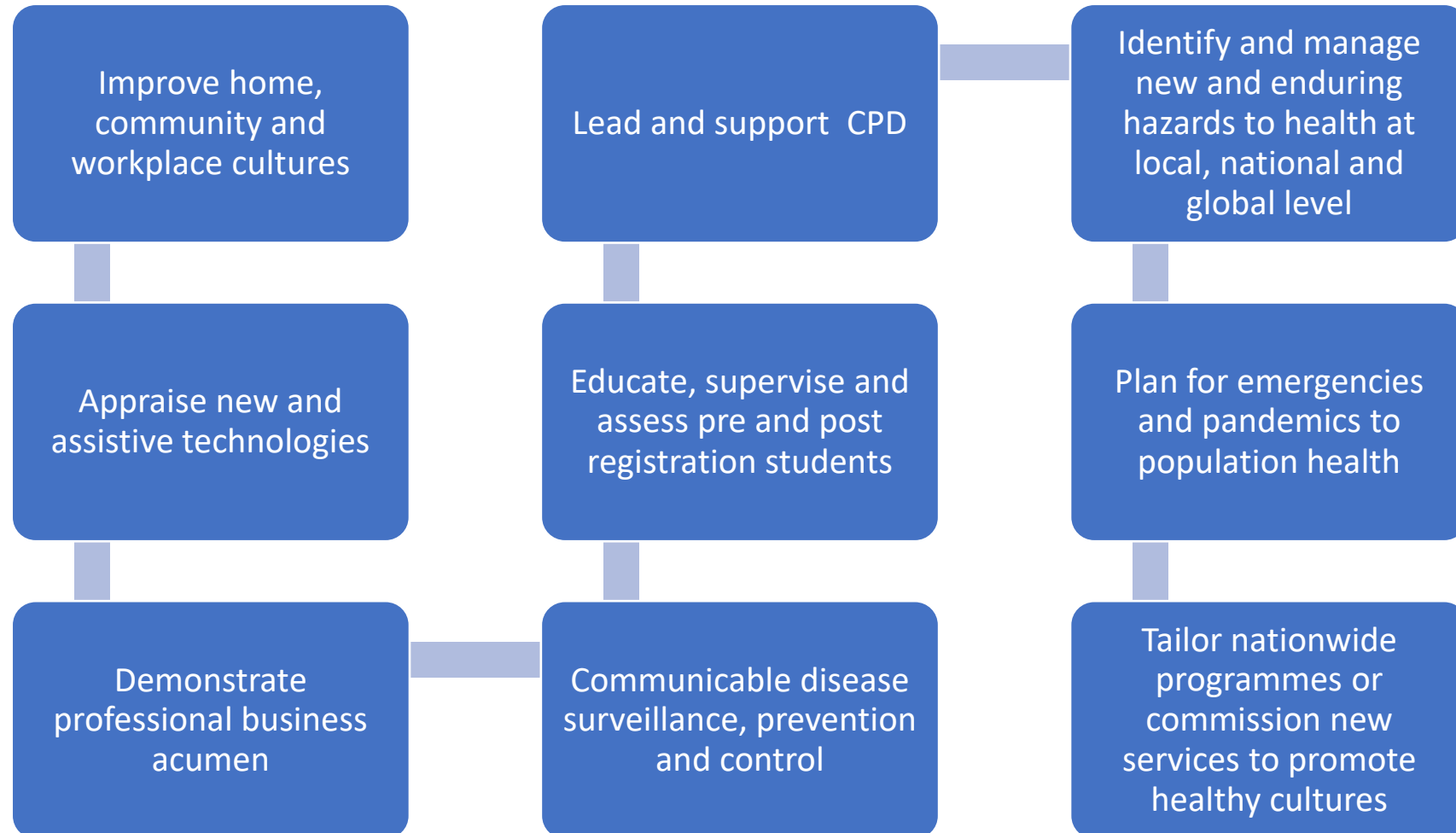
Adaptations and adjustments

Sustainable productive and fulfilling work

Organisational disaster planning

Maes E: Hyrwyddo gwasanaethau iechyd cyhoeddus a hyrwyddo lleoedd, amgylcheddau a diwylliannau iechyd

Sphere E: Advancing public health services and promoting healthy places, environments and cultures



Maes E

Sphere E

HV

- Child safety
- Safeguard child
- Allow parent autonomy
- Assess home situations and environment
- Evaluate community health needs and assets
- Sustainable hv strategies

SN

- Community and population profiling
- Lead collaborative culture and community developments
- Health education, promotion and safety campaigns
- Facilitate policy change which supports disadvantage
- Evaluate

OH

- Sustainable data driven occupational health strategies
- Focus in inclusion and innovation in job design
- Address health hazards
- Lead organisational response to safe appropriate and economically viable management in the workplace
- New an demerging technology
- Support assistive technologies

Maes F: Arwain a chydweithio o fuddsoddiad i weithredu a lledaenu

Sphere F: Leading and collaborating from investment to action and dissemination

Lead public health services

Lead teams

Assess service requirements

Monitor and report outcomes of strategy implementation

Triangulate information from audit, continuous improvement activity, governance, risk and performance monitoring

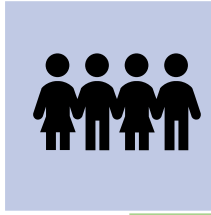
Maes F

Sphere F



HV

- Lead child health promotion programmes
- Lead and collaborate services for high risk children
- Work interdisciplinary and interagency teams on immediate and continuing risk of harm
- Effective decision making to refer and transfer
- Partnership with midwives
- Partnership with school nurses



SN

- Influence policy and strategy development using data and intelligence from home, school and community environments
- Evaluate existing services, identify gaps and develop strategies to improve
- Co produce and co design school services with school age children
- Work in partnership with relevant professionals



OH

- Triangulate and appraise workplace profiling
- Create systems for data collection, retrieval and dissemination
- Develop and manage safe and effective OH services
- Influence organisational policy
- Apply business acumen to develop, promote and report evidence based OH initiatives

Aseiad Ymarfer yn SCPHN

Practice Assessment in SCPHN

Pre registration students

Must be on same part of register as students programme

Registered nurse to assess a nursing student

knowledge and experience in students area of practice to assess against their pre reg proficiencies

Post registration students

All SCPHN have a role to assess SCPHN students

Completed preceptorship as SCPHN

support to assess post reg students in same field of practice ie. HV for Student HV

Safonau ar gyfer goruchwylio ac asesu myfyrwyr (2023) Standards for student supervision and assessment (2023)

Within post registration : Part 2 : SSSA

6.5- SCPHN students need to be assigned practice and academic assessors who are registered SCPHNs with appropriate experience for the students field of practice (HV, SN or OHN)

6.7- All students studying post registration qualifications should have practice and academic assessors in accordance with relevant programme standards

Part 3. post registration supervision and assessment: Practice Supervisors

Rhan 3. goruchwylio ac asesu ôl-gofrestru: Goruchwylwyr Ymarfer

University and practice partners together are responsible to :

- Ensure preparation, education, training and ongoing learning, support and expertise is provided for practice supervisors and practice assessors who support SCPHN and SPQ students
- Practice supervisors must have completed period of preceptorship as SCPHN or SPQ or can evidence prior learning and practice supervisor experience that facilitates effective evidence based learning for SCPHN / SPQ students



Ail-ddilysu

Revalidation

Every three years, at the point of renewal of registration, nurses, midwives and nursing associates will need to show that as a professional you are living by the Code's standards of practice and behaviour.

Keep a file, record or portfolio

- **450** practice hours
- **35** hours Continual Professional Development (CPD)
 - Review your development requirements
 - Scope of practice
 - Proficiencies
 - **20** hours will be participatory
- **5** pieces of practice related feedback
- **5** pieces of reflection
- Reflective discussion
- Confirmation



Defnyddio eich Safonau SCPHN (2022) ar gyfer ailddilysu

Using your SCPHN (2022) Standards in revalidation

How does your practice, reflective accounts and CPD demonstrate your knowledge and development as a SCPHN?

Always map to The Code (2018) [The Code \(nmc.org.uk\)](https://www.nmc.org.uk)

You can also map to SCPHN (2022) to strengthen your evidence. [standards-of-proficiency-for-specialist-community-public-health-nurses.pdf \(nmc.org.uk\)](https://www.nmc.org.uk/standards-of-proficiency-for-specialist-community-public-health-nurses.pdf)

- What SCPHN (NMC 2022) standards have you demonstrated in your submission?
- How does this support your role ?



Enghreifftiau o adnoddau DPP

CPD resource examples



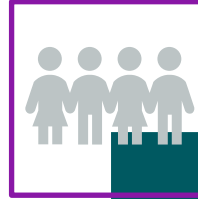
IHV

- Genomics
- Leadership development
- Infant mental health
- Child and Family Nutrition
- Disability Matters
- LBGTQI
- Cultural competence
- Child sexual exploitation / child sexual abuse



FOHN

- Leadership
- Well being
- Fitness to work
- Mental health disorders
- Biopsychosocial models
- Health risk management
- Evidence based practice resources



SAPHNA

- Vaccination toolkit
- Communications toolkit
- Social prescribing
- Childrens nutritional health
- Safeguarding and the school nurse
- Exploitation in school aged children
- SEND

NHS England has resources for CPD through the e learning for health platform (e-LfH)

Health Education in Wales has CPD events and modules (HEiW)

NHS Education in Scotland has CPD resources (NES)

Northern Ireland Practice and Education Council for Nursing and Midwifery Practice provide CPD resources (NIPEC)

Cefnogi asesu ar gyfer myfyrwyr SPQ

Supporting assessment for SPQ students

We're holding two webinars, one for SCPHN and one for SPQ, to help post registration students and practice learning partners to understand, interpret and apply our proficiency standards.



The webinars will support student learning and the application of proficiencies as mapped to our standards.

NMC Education Advisers, students and practice learning partners will provide examples of learning from case studies that demonstrate how competence can be achieved across some of the standards of proficiency. There will also be an opportunity for Q&A and shared learning.

The sessions are open to everyone but are particularly aimed at post registration SCPHN/SPQ students, and practice learning partners.

- 11 March, 13:00 -14:00 – SCPHN ([register here](#))
- 13 March, 13:00 -14:00 – SPQ ([register here](#))

Sesiynau galw heibio misol

Monthly drop in sessions

Open to all Academics and practice learning partners, please fill in this short form to get the joining details:

r1.dotdigital-pages.com/p/129A-1GXI/drop-ins

The sessions are the first Wednesday of the month and 12.30-13.30

Facilitated by NMC colleagues; Nursing and Midwifery advisers, standards specialist, Education QA, Employer link regulation adviser

Reach us for easy access to your queries, please note we are unable to offer clinical advice as this is outside our regulatory remit

Cadwch mewn cysylltiad

Keep in touch



nmc.org.uk



[@nmcnews](https://twitter.com/nmcnews)



facebook.com/nmcuk



linkedin.com/company/the-nursing-and-midwifery-council



Sesiwn Holi ac Ateb Question and Answer Session



Facilitator - Marie Button/Rebecca Boore/Emma Davies

Please raise your virtual hand or pop questions in the chat bar!



Diolch!
Thank you!

elaine.robinson@nmc-uk.org

educationandstandards@nmc-uk.org